

Supporting Information for

MOFs-Based Nitric Oxide Therapy for Tendon Regeneration

Jun Chen^{1, #}, Dandan Sheng^{1, #}, Ting Ying^{2, #}, Haojun Zhao³, Jian Zhang¹, Yunxia Li¹, He Xu^{2, *}, Shiyi Chen^{1, *}

¹Department of Sports Medicine, Huashan Hospital, Fudan University, Shanghai 200040, People's Republic of China

²College of Chemistry and Materials Science, Shanghai Normal University, Shanghai 200234, People's Republic of China

³Department of Ultrasound, Jing'an District Center Hospital, Fudan University, Shanghai 200040, People's Republic of China

#Jun Chen, Dandan Sheng and Ting Ying contributed equally to this work

*Corresponding authors. E-mail: cshiyi@163.com (Shiyi Chen), xuhe@shnu.edu.cn (He Xu)

Supplementary Figures and Table



Fig. S1 Digital photo of the solid products MHK

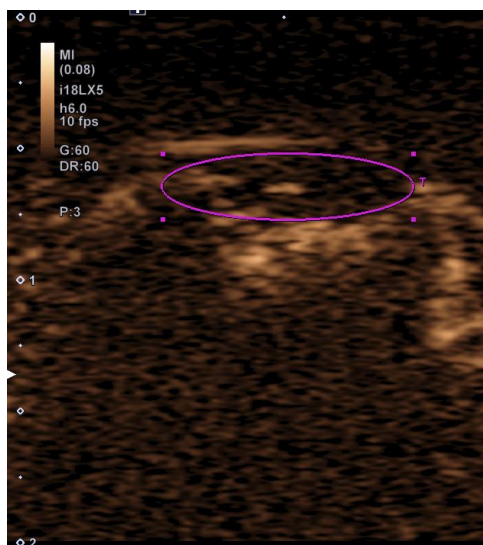


Fig. S2 CEUS imaging in the video. The purple circle presents the region of interest

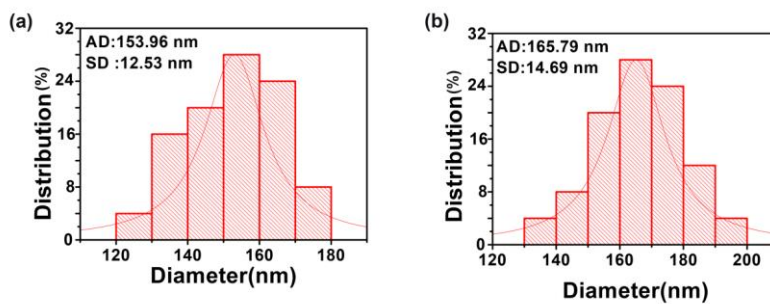


Fig. S3 Statistical analysis of the size distribution of (a) HK and (b) NMHK

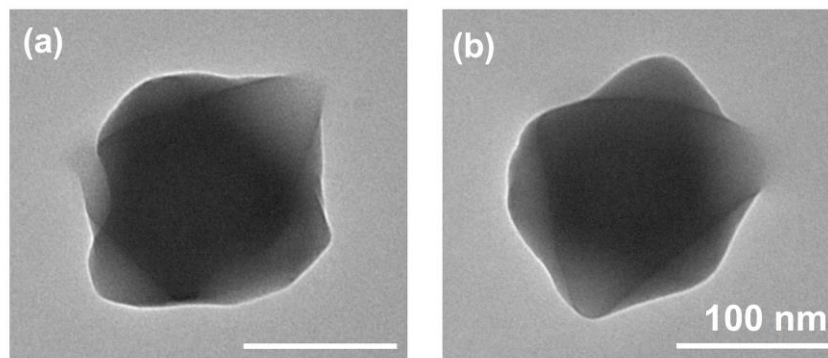


Fig. S4 TEM images of a HK and b NMHK (Scale bar = 100 nm)

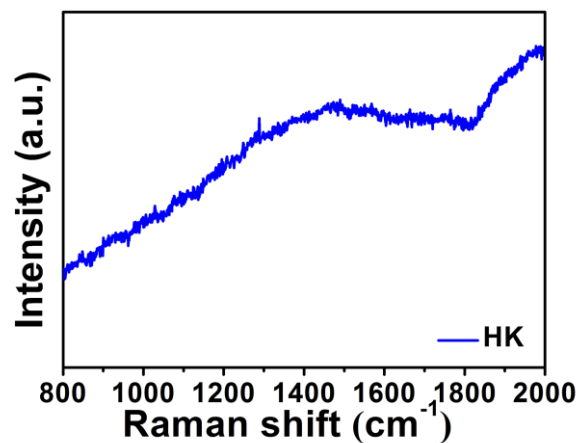


Fig. S5 Raman spectrum of the HK

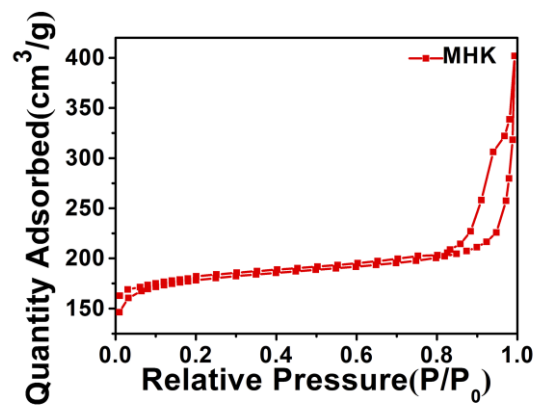


Fig. S6 Nitrogen isotherms of the MHK

Table S1 Structure parameters of HK and NMHK

	S_{BET} ($\text{m}^2 \text{g}^{-1}$)	D_p (\AA)	V_p ($\text{cm}^3 \text{g}^{-1}$)
HK	1194.77	21.22	0.49
NMHK	609.48	20.55	0.34

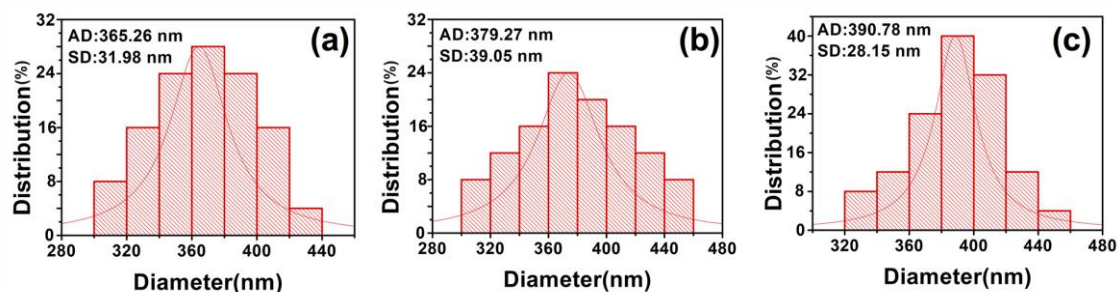


Fig. S7 Statistical analysis of the fiber diameter of the **a** PGA, **b** MPGA, and **c** NMPGA

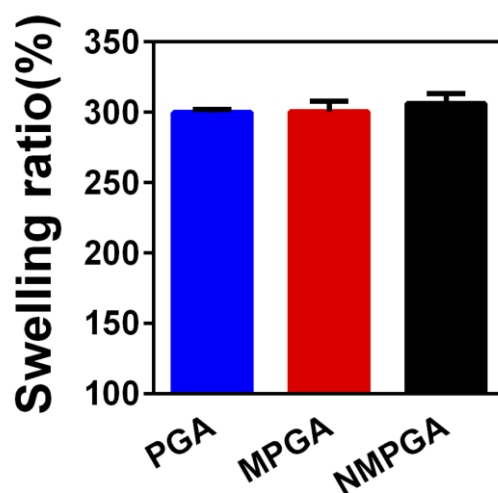


Fig. S8 Swelling ratio of the PGA, MPGA and NMPGA

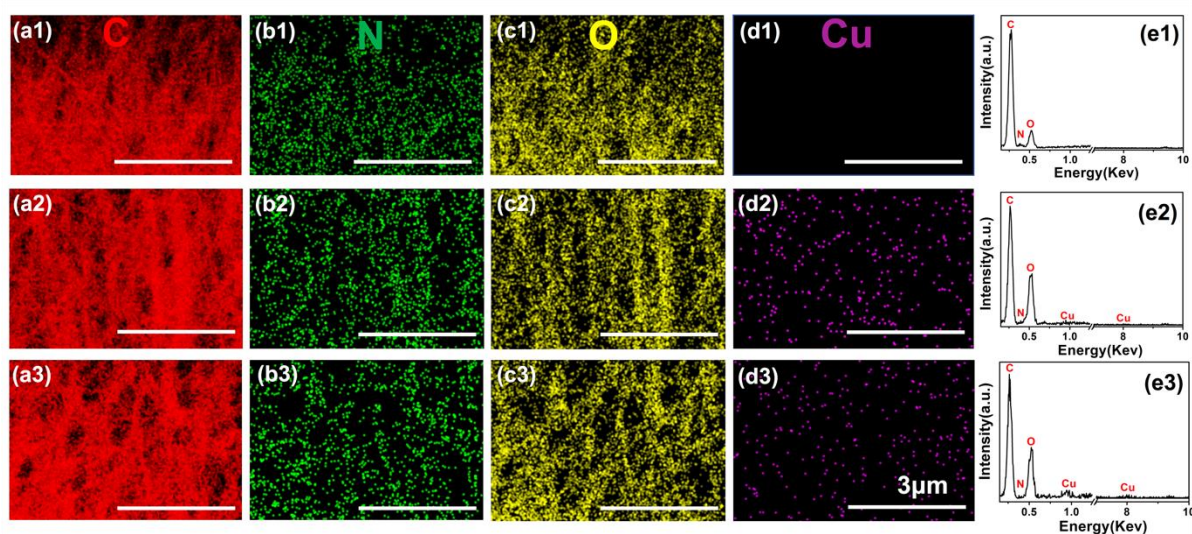


Fig. S9 Element mapping analysis showed C, N, O, Cu element distributed in the scaffolds: **a1-d1** PGA, **a2-d2** MPGA and **a3-d3** NMPGA. The intensity of element contents in the corresponding sample were shown in graph **e1**, **e2**, and **e3** (Scale bar = 3 μm)

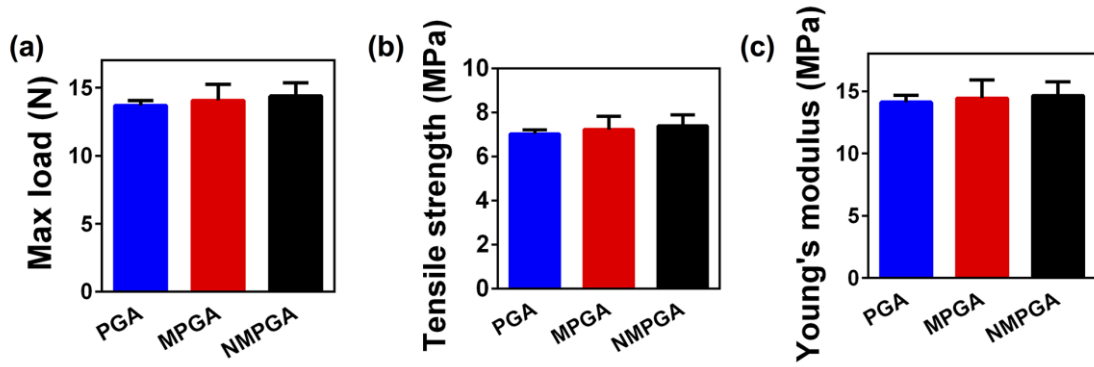


Fig. S10 **a** Max load, **b** tensile strength, and **c** Young's modulus of the PGA, MPGA, and NMPGA

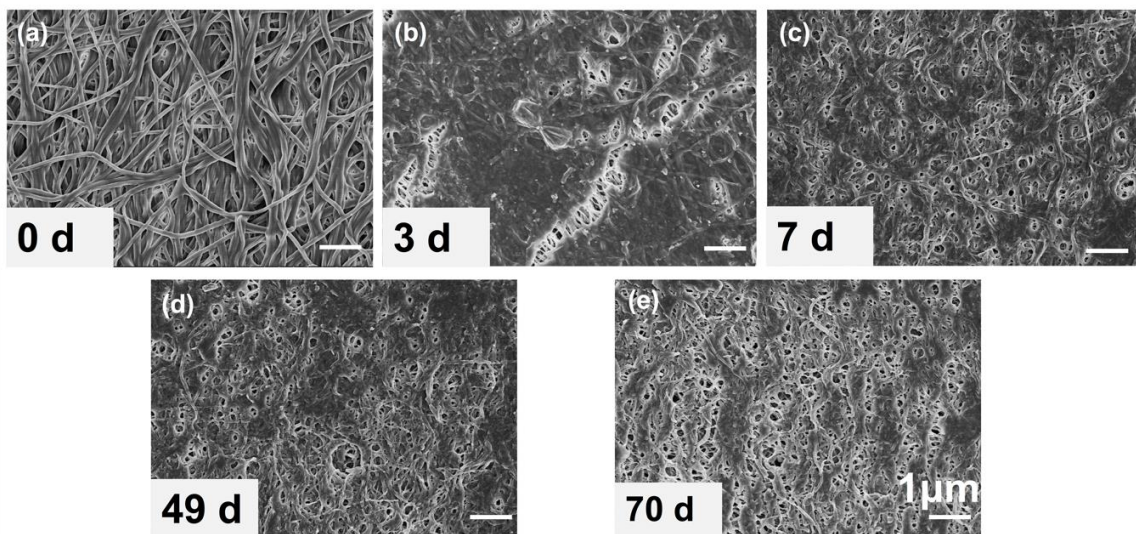


Fig. S11 FE-SEM images of the morphology of the NMPGA after soaking in PBS solution for 0, 3, 7, 49, and 70 d (Scale bar = 1 μm)

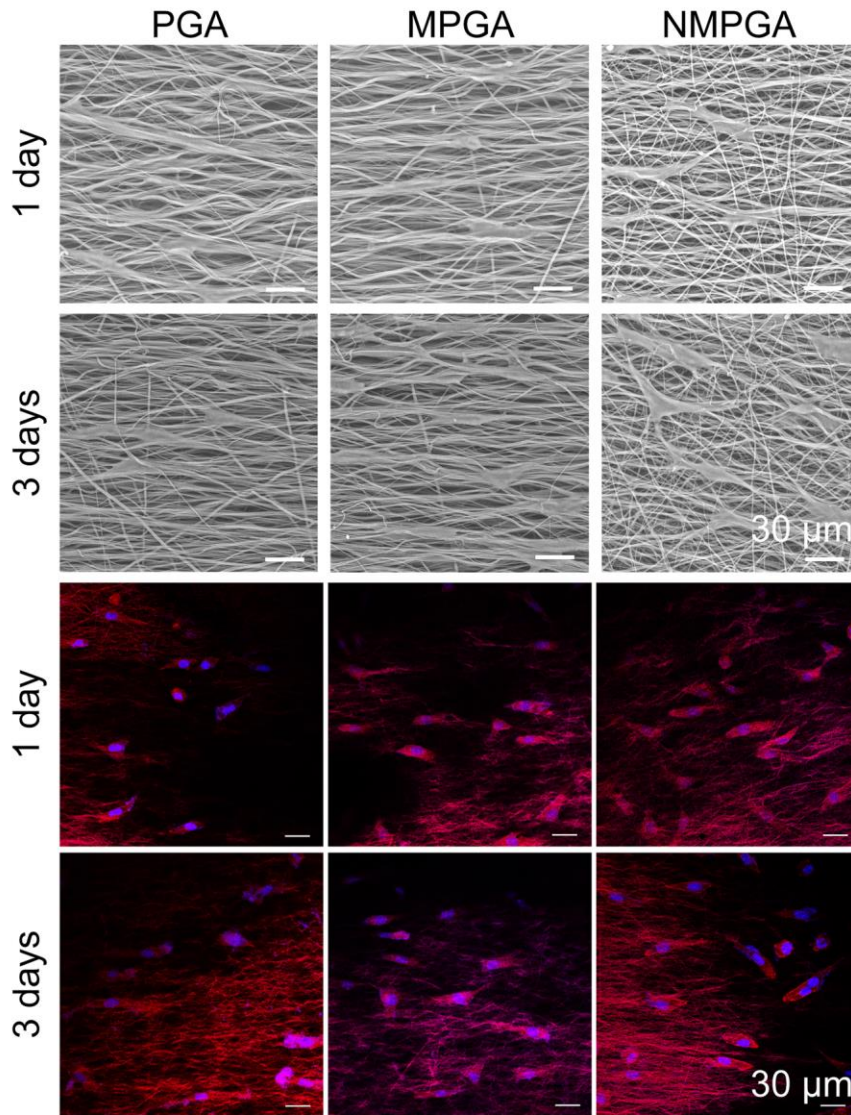


Fig. S12 SEM and CLSM images of HUVECs cultured on the PGA, MPGA, NMPGA for 1 and 3 d. FITC-Phalloidin for cytoskeletons (red) and DAPI for nuclei (blue) (Scale bar = 30 μm)

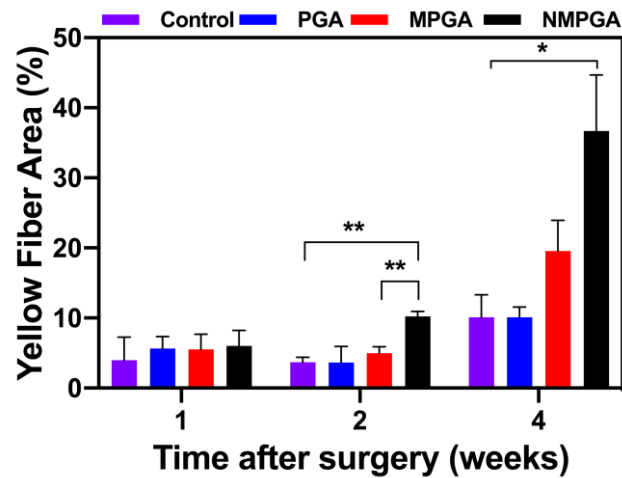


Fig. S13 Yellow collagen fiber area proportion at 1, 2, and 4 w post-surgery (*P < 0.05, **P < 0.01)