

Supporting Information for

## **Growth of SnO<sub>2</sub> Nanoflowers on N-doped Carbon Nanofibers as Anode for Li- and Na-ion Batteries**

Jiaojiao Liang<sup>1, #</sup>, Chaochun Yuan<sup>2, #</sup>, Huanhuan Li<sup>2</sup>, Kai Fan<sup>1</sup>, Zengxi Wei<sup>1</sup>, Hanqi Sun<sup>1</sup>, Jianmin Ma<sup>1, 3, \*</sup>

<sup>1</sup>School of Physics and Electronics, Hunan University, Changsha 410082, People's Republic of China

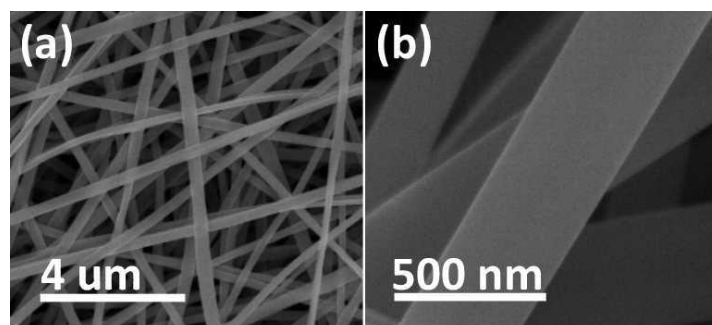
<sup>2</sup>Automotive Engineering Research Institute, Jiangsu University, Zhenjiang 212013, People's Republic of China

<sup>3</sup>Key Laboratory of Advanced Energy Materials Chemistry (Ministry of Education), Nankai University, Tianjin 300071, People's Republic of China

<sup>#</sup>The two authors have equal contribution to this work.

<sup>\*</sup>Corresponding author. E-mail: [nanoelechem@hnu.edu.cn](mailto:nanoelechem@hnu.edu.cn)

### **Figures**



**Fig. S1 a, b** Low and high magnification SEM images of NC nanofibers

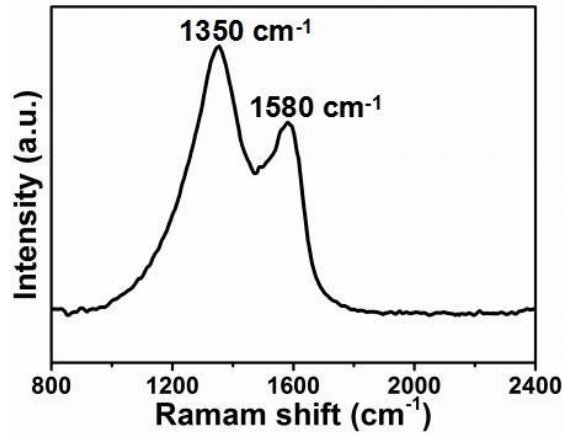


Fig. S2 Raman spectrum of NC@SnO<sub>2</sub>

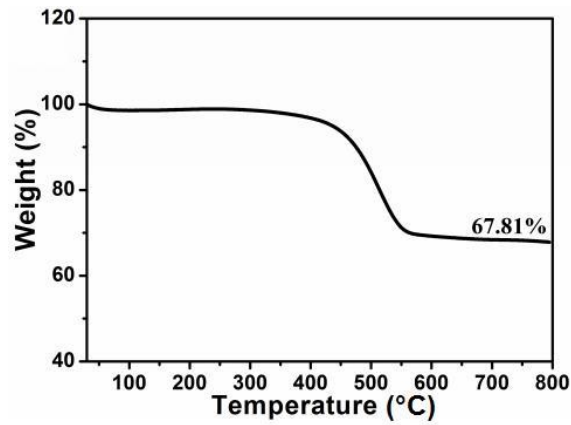


Fig. S3 TGA curve of NC@SnO<sub>2</sub>

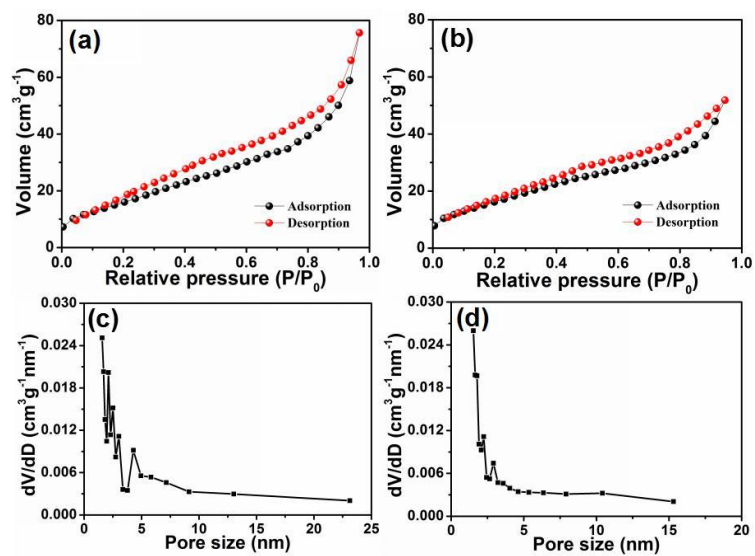
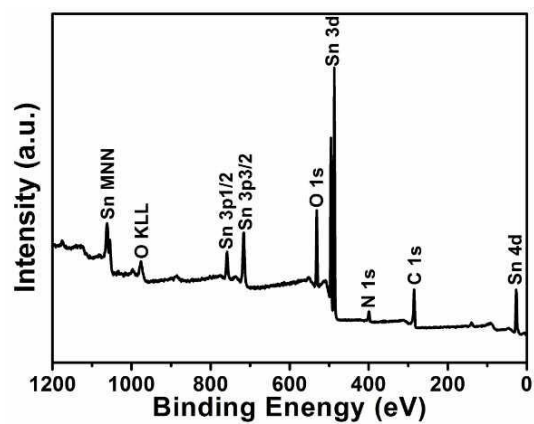
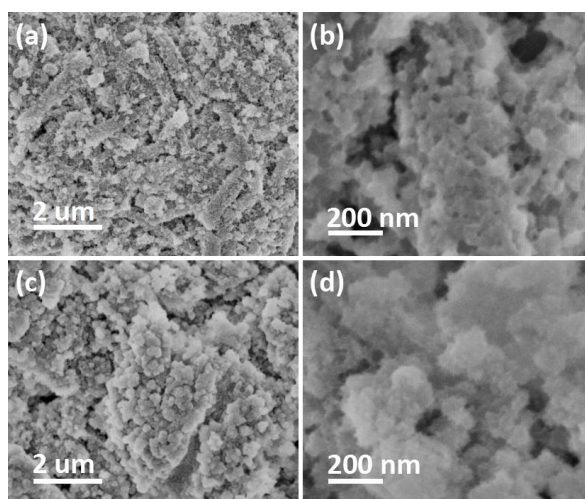


Fig. S4 a, b Nitrogen adsorption-desorption isotherms and c, d the pore-size distribution curves of NC@SnO<sub>2</sub> and SnO<sub>2</sub>



**Fig.re S5** XPS spectrum of NC@SnO<sub>2</sub>



**Fig. S6** SEM images of the electrodes after cycling for the NIBs: **a, b** NC@SnO<sub>2</sub>; **c, d** SnO<sub>2</sub>