

Supporting Information for

A Self-Powered Breath Analyzer Based on PANI/PVDF Piezo-Gas-Sensing Arrays for Potential Diagnostics Application

Yongming Fu^{1,2,3}, Haoxuan He³, Tianming Zhao³, Yitong Dai³, Wuxiao Han³, Jie Ma², Lili Xing^{1,3,*}, Yan Zhang^{1,*}, Xinyu Xue^{1,3,*}

¹School of Physics, University of Electronic Science and Technology of China, Chengdu 610054, People's Republic of China

²College of Physics and Electronics Engineering, Shanxi University, Taiyuan 030006, People's Republic of China

³College of Sciences, Northeastern University, Shenyang 110004, People's Republic of China

*Corresponding authors. E-mail: xinglili@mail.neu.edu.cn (L. Xing); zhangyan@uestc.edu.cn (Y. Zhang); xuexinyu@mail.neu.edu.cn (X. Xue)

Supplementary Figures

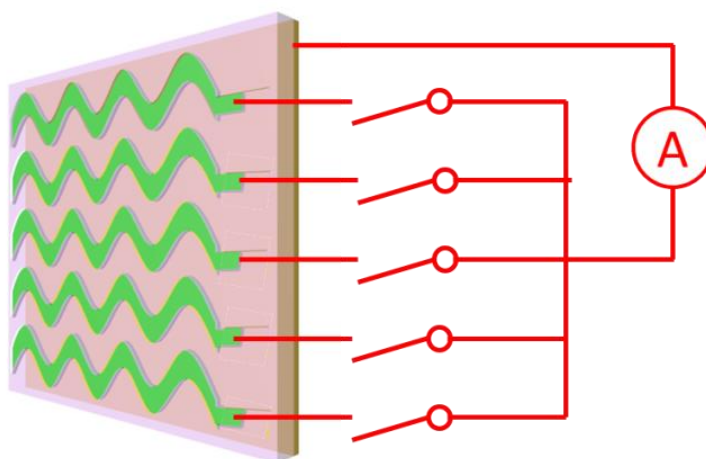


Fig. S1 Schematic diagram of electrode configuration for current measurements

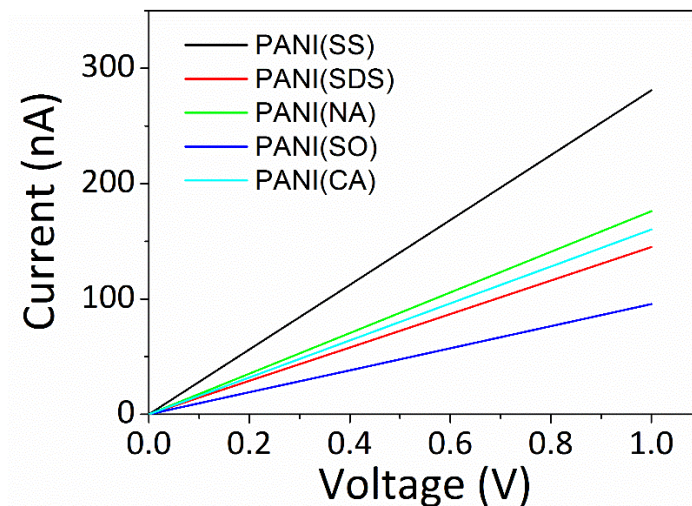


Fig. S2 *I-V* curves of the five PANI derivatives

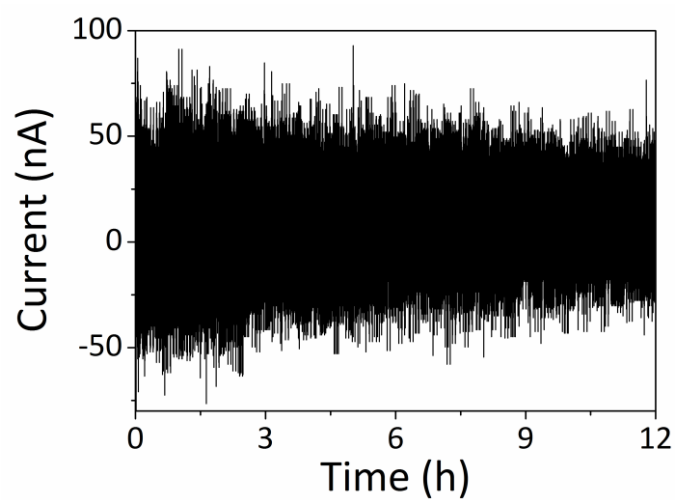


Fig. S3 Long-term stability

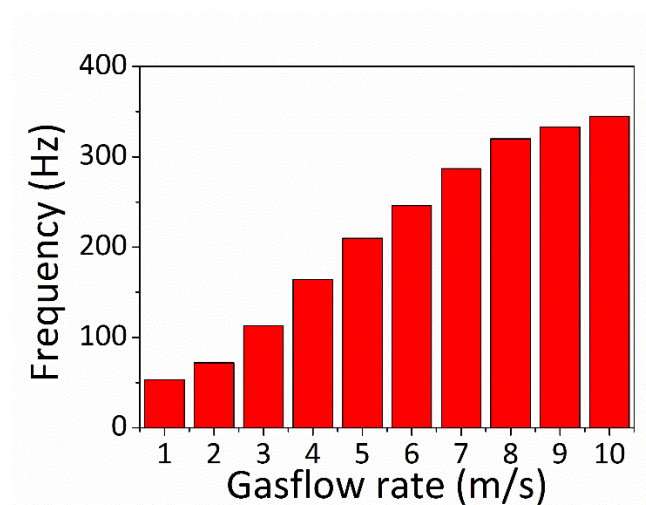


Fig. S4 The relationship between current frequency and gasflow rate

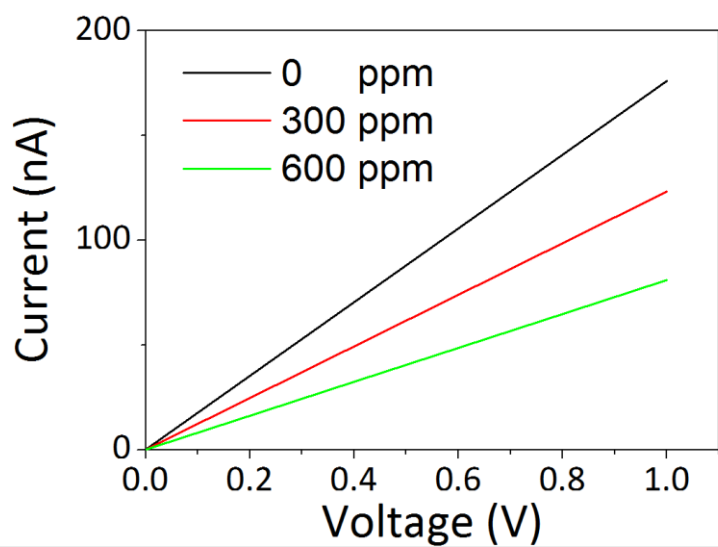


Fig. S5 *I-V* curve of PANI(SDS) sensing unit under 0, 300, and 600 ppm ethanol gasflow

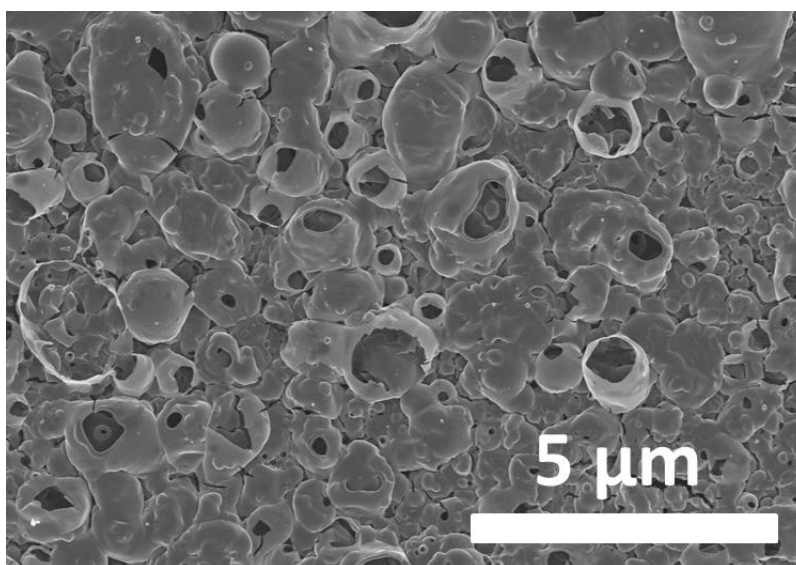


Fig. S6 SEM image of PANI(NA) upon exposure to CH_4

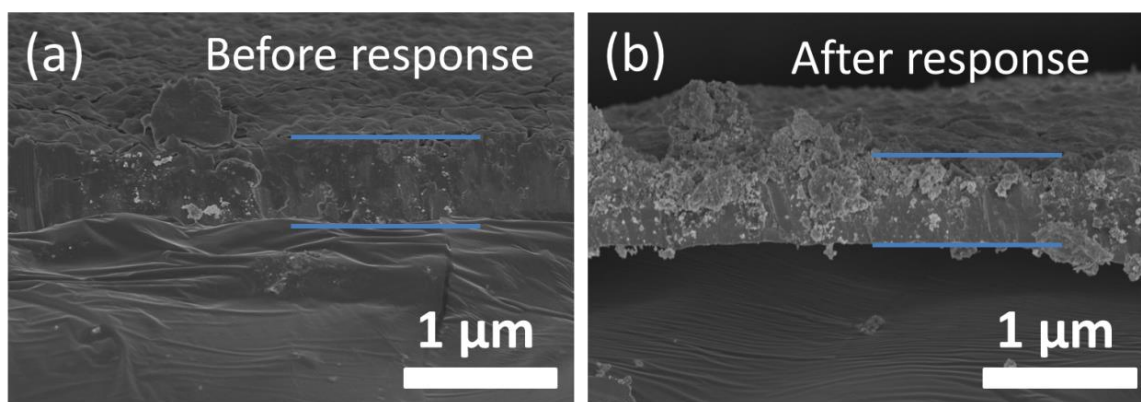


Fig. S7 Cross-view SEM images of PANI(NA) **a** before and **b** after exposed to NH_4