

Supporting Information for

## High-performance Na-ion Storage of S-doped Porous Carbon

### Derived from Conjugated Microporous Polymers

Yuquan Li<sup>1,†</sup>, Bin Ni<sup>1,†</sup>, Xiaodan Li<sup>2</sup>, Xianghui Wang<sup>1,\*</sup>, Dafeng Zhang<sup>3</sup>, Qingfei Zhao<sup>5</sup>, Jinliang Li<sup>2,\*</sup>, Ting Lu<sup>1,4,\*</sup>, Wenjie Mai<sup>2</sup>, Likun Pan<sup>1</sup>

<sup>1</sup>Shanghai Key Laboratory of Magnetic Resonance, School of Physics and Materials Science, East China Normal University, 3663 N. Zhongshan Rd., Shanghai 200062, People's Republic of China

<sup>2</sup>Siyuan Laboratory, Guangdong Provincial Engineering Technology Research Center of Vacuum Coating Technologies and New Energy Materials, Department of Physics, Jinan University, Guangzhou, Guangdong 510632, People's Republic of China

<sup>3</sup>School of Materials Science and Engineering, Liaocheng University, Liaocheng, Shandong 252000, People's Republic of China

<sup>4</sup>Department of Chemical Engineering, School of Environmental and Chemical Engineering, Shanghai University, 99 Shangda Road, Shanghai 200444, People's Republic of China

<sup>5</sup>Testing and Analysis Centre, College of Chemistry and Materials Science, Shanghai Normal University, 100 Guilin Road, Shanghai 200234, People's Republic of China

†Yuquan Li and Bin Ni contributed equally to this work.

\*Corresponding authors. E-mail: xhwang@phy.ecnu.edu.cn (Xianghui Wang); lijnliang@email.jnu.edu.cn (Jinliang Li); tlu@phy.ecnu.edu.cn (Ting Lu)

### Supplementary Figures

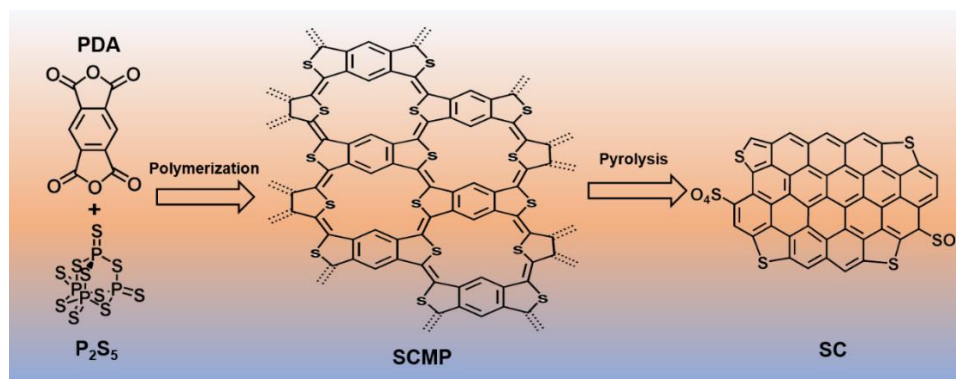


Fig. S1 Schematic of the synthesis process of SCs

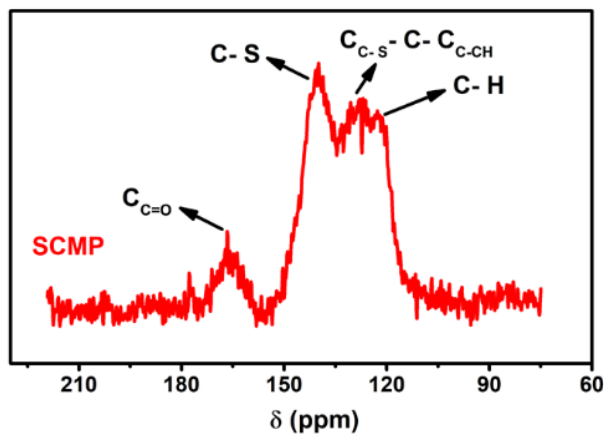


Fig. S2 Solid-state  $^{13}\text{C}$  NMR spectra of SCMP

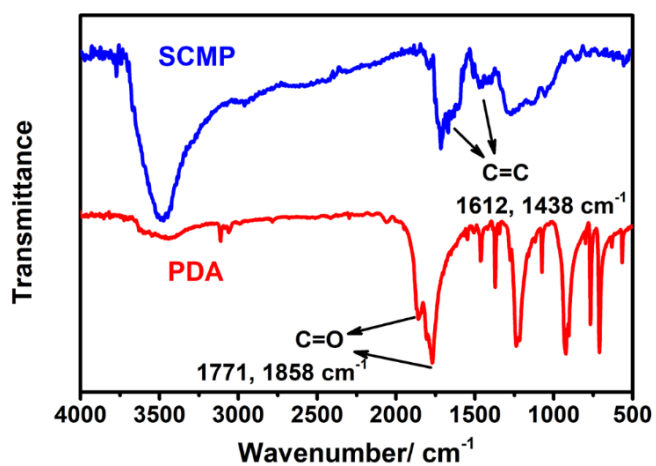


Fig. S3 FTIR spectra of PDA and SCMP

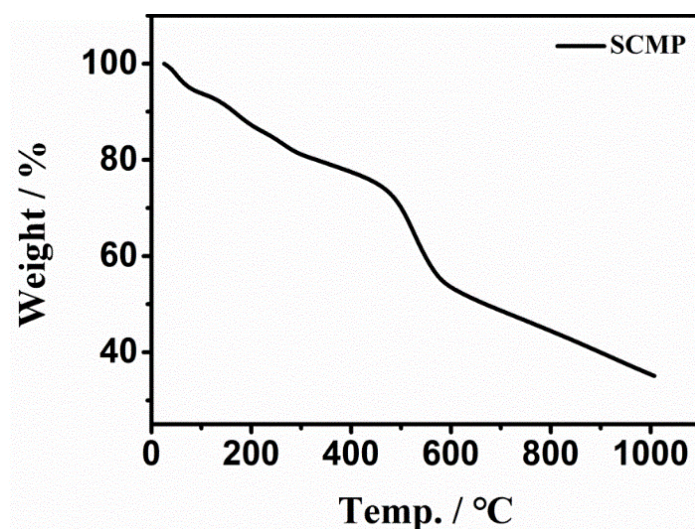


Fig. S4 TGA curve of SCMP in nitrogen atmosphere

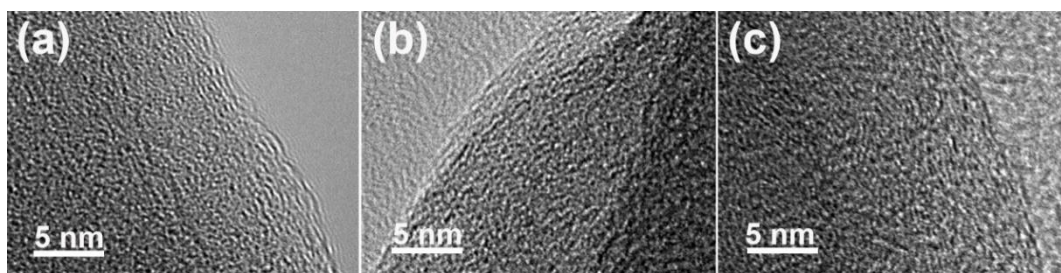


Fig. S5 HRTEM images of **a** SC-600, **b** SC-700, **c** SC-800, **d** SC-900

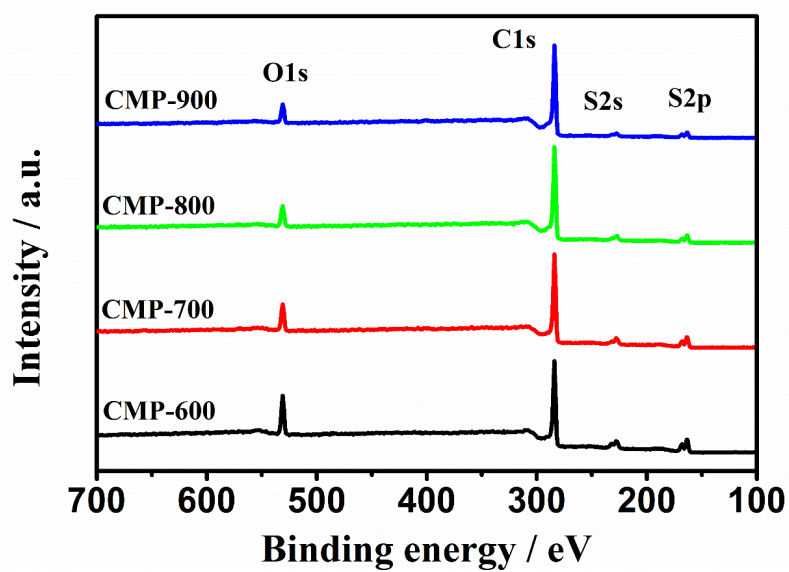


Fig. S6 XPS spectra of SCs

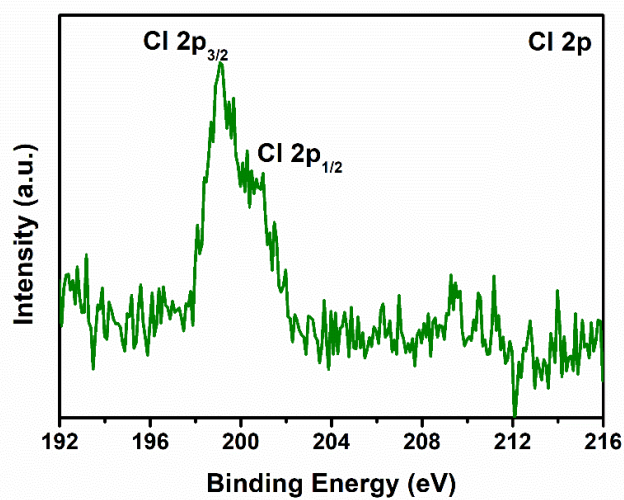


Fig. S7 Ex-situ Cl 2p XPS spectrum of SC-600 after initial cycle