

Supporting Information for

Correlating the Interfacial Polar-Phase Structure to the Local Chemistry in Ferroelectric Polymer Nanocomposites by Combined Scanning Probe Microscopy

Jiajie Liang¹, Shaojie Wang¹, Zhen Luo¹, Jing Fu¹, Jun Hu¹, Jinliang He¹, and Qi Li^{1,*}

¹State Key Laboratory of Power System, Department of Electrical Engineering, Tsinghua University, Beijing, 100084, P. R. China

*Corresponding author. E-mail: qili1020@tsinghua.edu.cn (Qi Li)

Supplementary Figures

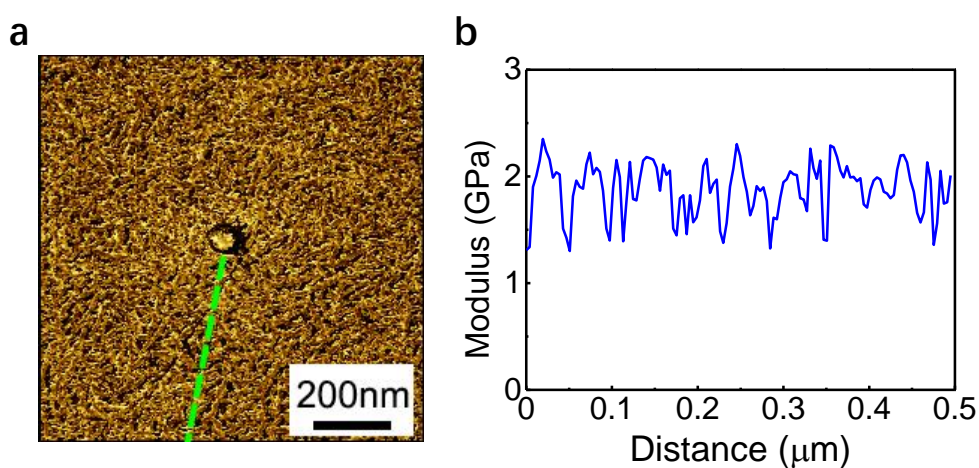


Fig. S1 **a)** The elastic modulus of sample with undecorated particles. **b)** Profile of **a)** at the dashed line

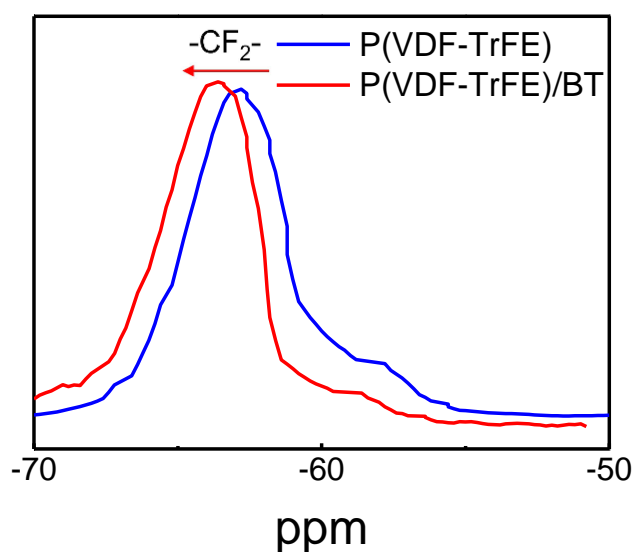


Fig. S2 ¹⁹F NMR spectra of P(VDF-TrFE) and its nanocomposites

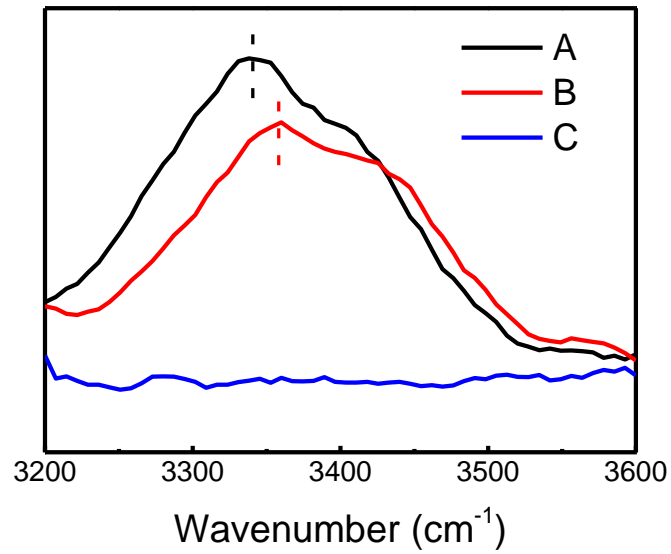


Fig. S3 Nano-IR spectra of different spots. A: the interface of BHEAPTS-decorated sample. B: the interface of TMPS-decorated sample. C: the matrix of BHEAPTS -decorated sample

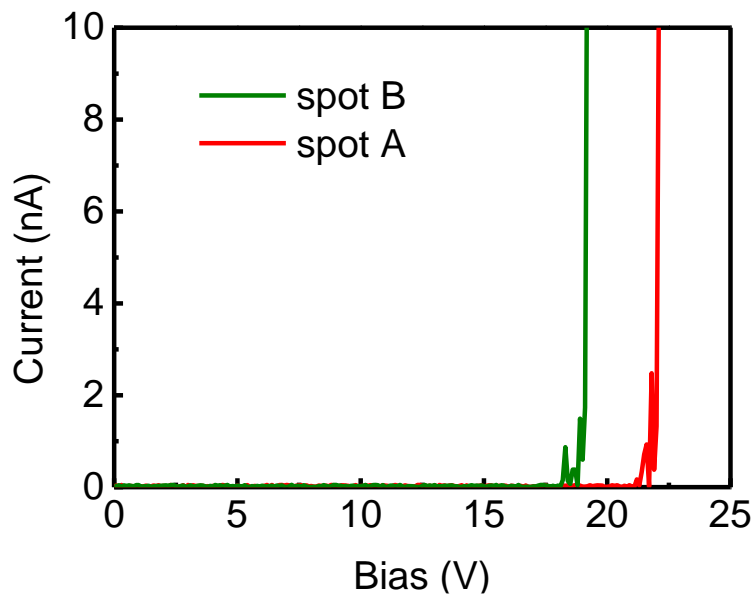


Fig. S4 Breakdown measurements by C-AFM of point A and point B in the BHEAPTS-decorated sample